

SHAREAZA™ INSTALL GUIDE

(BASED ON SHAREAZA™ V2.4.0.0)

©2007-2008 by OldDeath

Quotation:



Shareaza™ is a peer-to-peer client for Windows that allows you to download any file-type found on several popular P2P networks. Shareaza™ is FREE & contains NO Spyware or third-party products.

From: shareaza.sourceforge.net

Summary

Use these links to navigate threwh the document.

SECTION1: Install and configure Shareaza

- [Introduction](#)
- [A little description of the application](#)
- [Installation and configuration](#)
 - [Installation](#)
 - [The quick start wizard](#)
 - [How to check the bandwidth of your internet connection](#)
 - [TCP/IP.sys tuning](#)
 - [Additional configuration that has to be done](#)
 - [Advanced settings configuration](#)
 - [Configure your router and firewall, add some GWCs and test if everything works](#)
- [Troubleshoot: "I don't pass the connection test!"](#)
- [Security...](#)
 - [PeerGuardian2](#)
 - [Security filters](#)
 - [Anti Virus and Firewall](#)

SECTION2: FAQ and troubleshooting

- [Official Shareaza FAQ](#)
- [Windows XP SP2/3 & Vista connection limit](#)
- [Troubleshoot: Are my router and firewall set up correctly?](#)
- [How to do a clean install?](#)
- [How to open ports & terminology](#)

SECTION3: Using Shareaza

- [Using Shareaza: Tips, tweaks and other things I would like to add...](#)

SECTION1: Install and configure Shareaza

Introduction

Shareaza™ is software based on the P2P concept, which means every user shares files on his own computer with everybody else in the peer to peer network. Every file downloaded is in fact uploaded by another user from his own computer.

To assure the stability of the network and to coordinate the computers that are part of the system, no central server is needed, as is for example the case in the eDonkey2000 network. This means that it is impossible to take down the entire network by taking down a central server for example...

The way Shareaza™ works is 100% legal, even if there are possibilities to download copy-right protected files. Labeling a filesharing application 'illegal' because there are possibilities to commit a certain crimes with it is as if you would try to sue Microsoft, because their Internet Explorer is used by some terrorists to coordinate their attacks against the western civilization. The download of copy-right protected files is of course prohibited in many countries and doing so could get you in serious trouble, depending on the laws concerning this subject in your country.

At this place, I would like to remind you that using Shareaza and/or this guide is always at your own risk. This guide is delivered "as is" without warranty of any kind, including but not limited to containing no mistakes or no wrong information. [blablabla] I (the author) am not responsible for any kind of damage you get or you make by using this guide.

(I hate having to add such sentences and it makes me sick, but as you may well know, there are enough a**holes out there...)

OldDeath,
member of the Shareaza community.

[→ back to the summary](#)

A little description of the application...



Shareaza™ is one of the few very good [P2P](#) multi-network-clients. The three included networks are [Gnutella1](#), [Gnutella2](#) and the server-based [ed2k network](#). [Torrent-downloads](#) are also supported.

Another advantage of the program is the included media center and file library allowing you the best possible management of the files downloaded from the networks & those you wish to share.

The third point really worth mentioning here is the very clean and good overview of your up- and downloads. Like every part of the program, it is entirely customizable and allows you to see what exactly is happening.

Then there is the search function of Shareaza™. Not only does it give you a simple list of all found files, but you get also comments on / evaluations of the files made by other users, the number of sources available and it even provides the option to choose the networks you want to search.

Code:

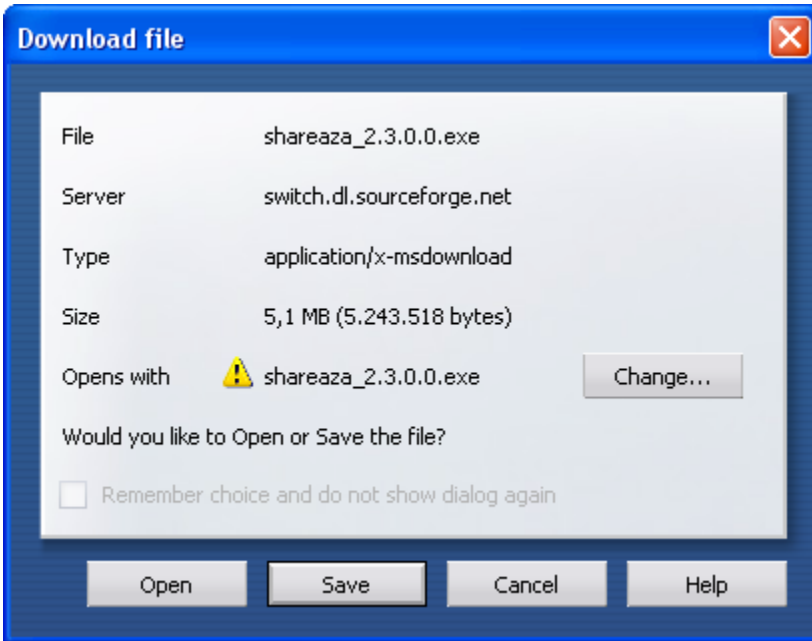
```
Shareaza™ has been released under the GNU General Public License.  
That means Shareaza™ is Open Source and everyone even you can help make it  
better.
```

[→ back to the summary](#)

Installation and configuration...

[Click here to go to the download website of Shareaza™.](#)

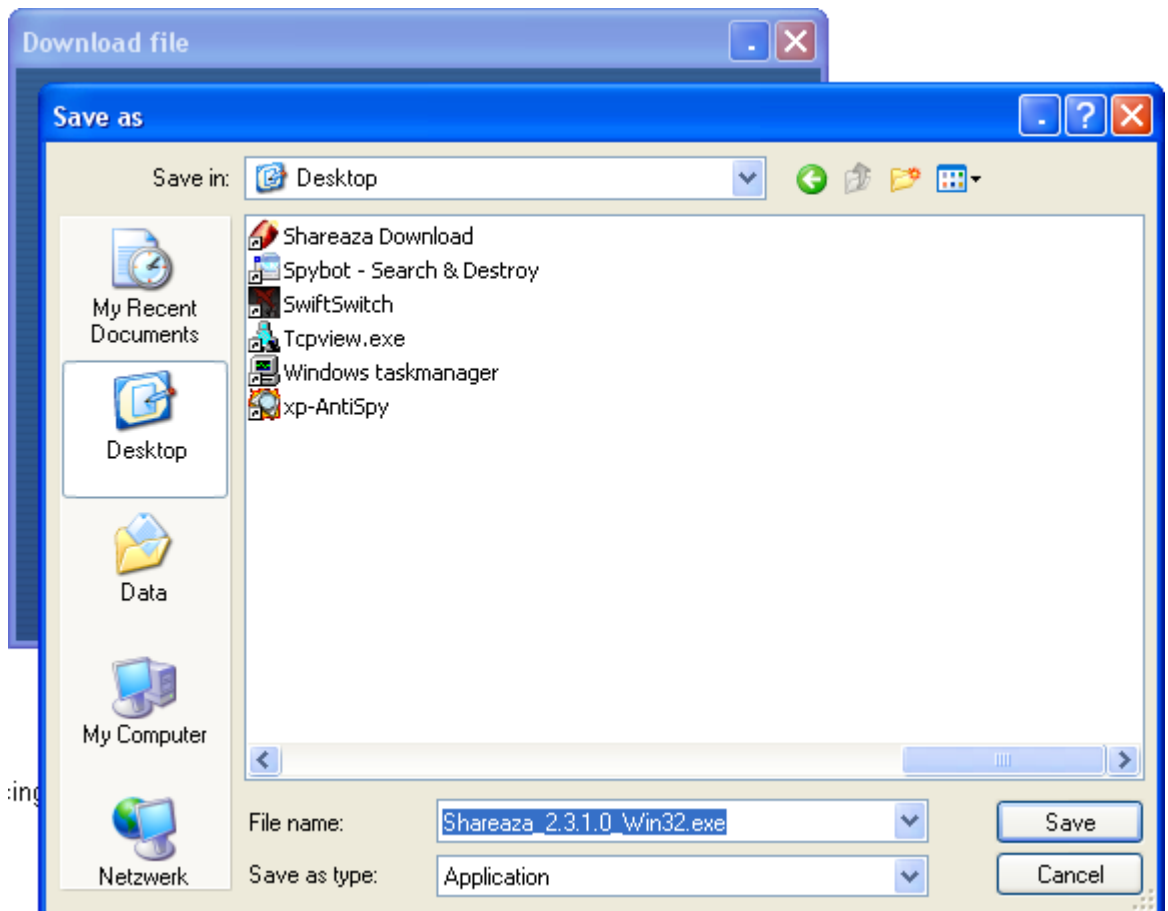
The following will guide you through the installation with the settings which worked best for me and on my computer system. Shareaza™ is highly customizable, so take your time after the installation to choose the configuration which is best for you. But be careful: Some configurations will cause non-functionality of the software, so pay attention to what you change...

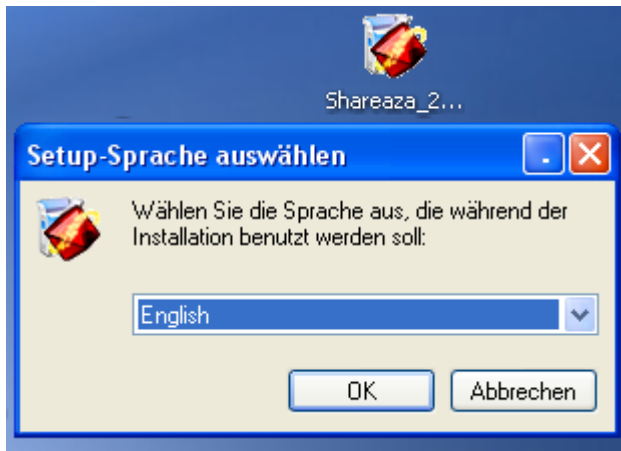


The first step is to download the software. Use the link above to get the installer and save it to a directory where you can find it afterwards. For easy finding after the download completes I'd recommend saving it to your Desktop.

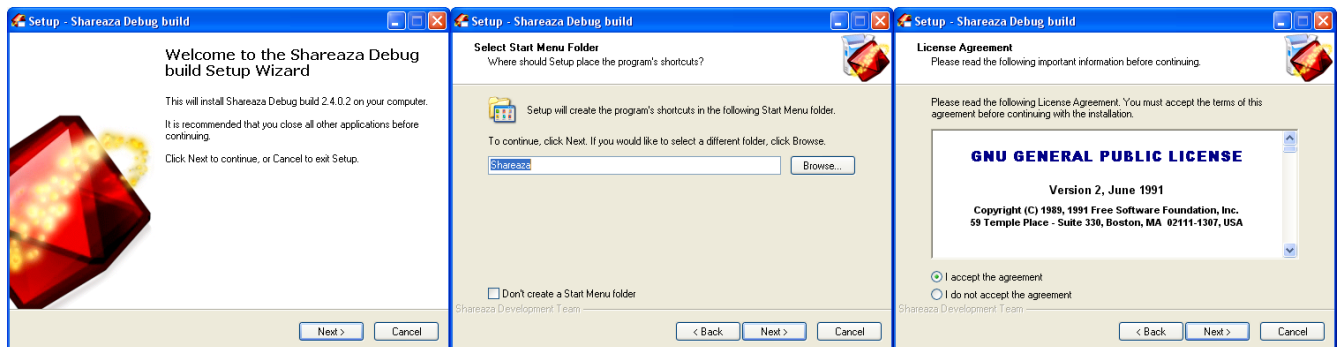
Save the file...

After you have saved the installer, double-click on it to begin the install process...

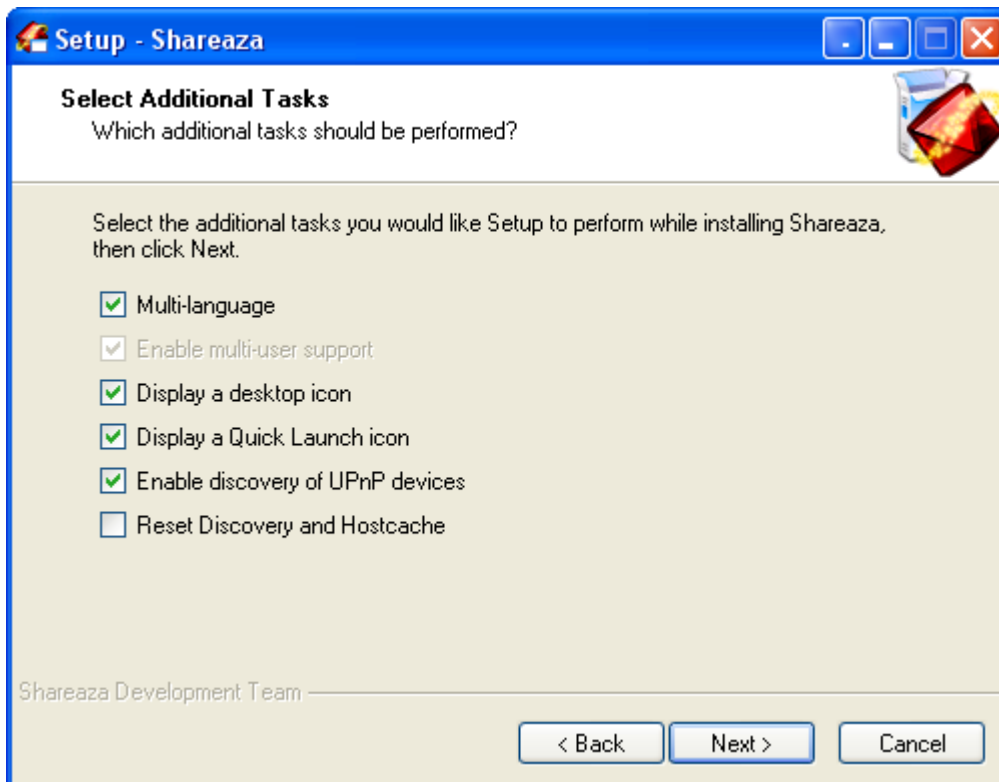




...and choose your preferred language...

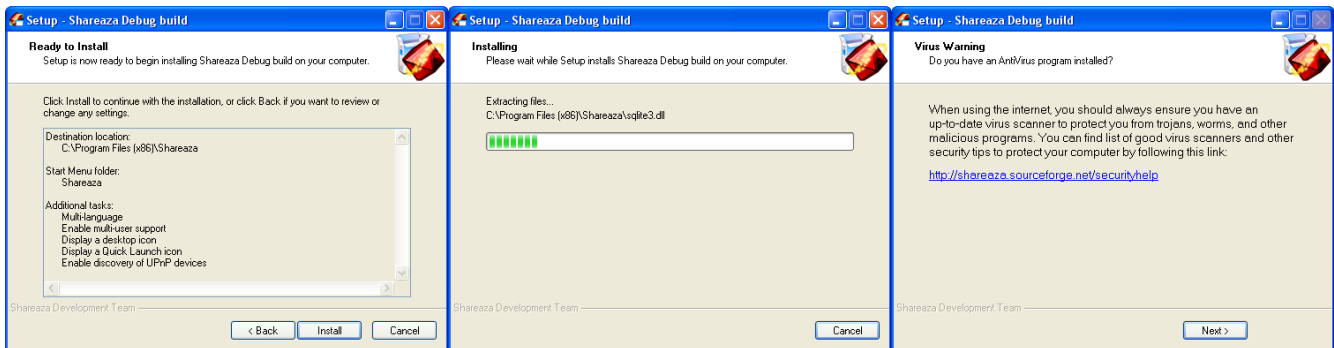


Follow the usual installation screens by clicking "continue" or "accept"...
Welcome... Accept license... Create a folder in the start menu...



Choose the additional tasks to be done during the install process...

If you are upgrading from a version prior to v2.3.1.0, I strongly recommend you to use the option to reset your Discovery services and Host cache. Also, you shouldn't delete old installer packages; you never know what they might be useful for in the future. (Note: Multi-user support enables the ability to have different settings and downloads on the different accounts on your computer.)



Double-check everything... Installation... Check out the security tips...

Close the setup exe. Shareaza™ should open now. You might see a warning message like this one from your firewall, once Shareaza tries to connect. Note that depending on how your system is configured and if you run Shareaza for the first time or not, you may see this warning either at a later time or you won't see it at all. Select "Unblock" (I suppose you are planning to use the application at a later time).



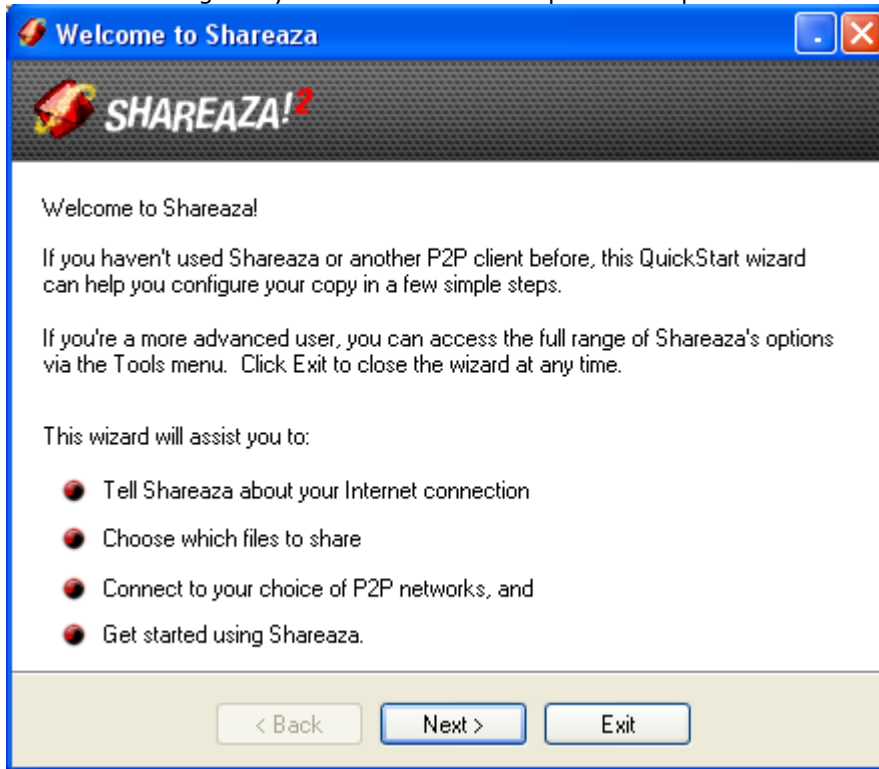
Shareaza should open with configuration wizard in the middle of your computer screen. If it doesn't display automatically or if you want to rerun the wizard at a later time, you can access it over the menu "Tools".

(Note that this wizard resets quite much settings, so you will have to do big parts of the configuration again after having rerun it.)

[→ back to the summary](#)

Quick start wizard...

This wizard will guide you through the most important steps of Shareaza's configuration...

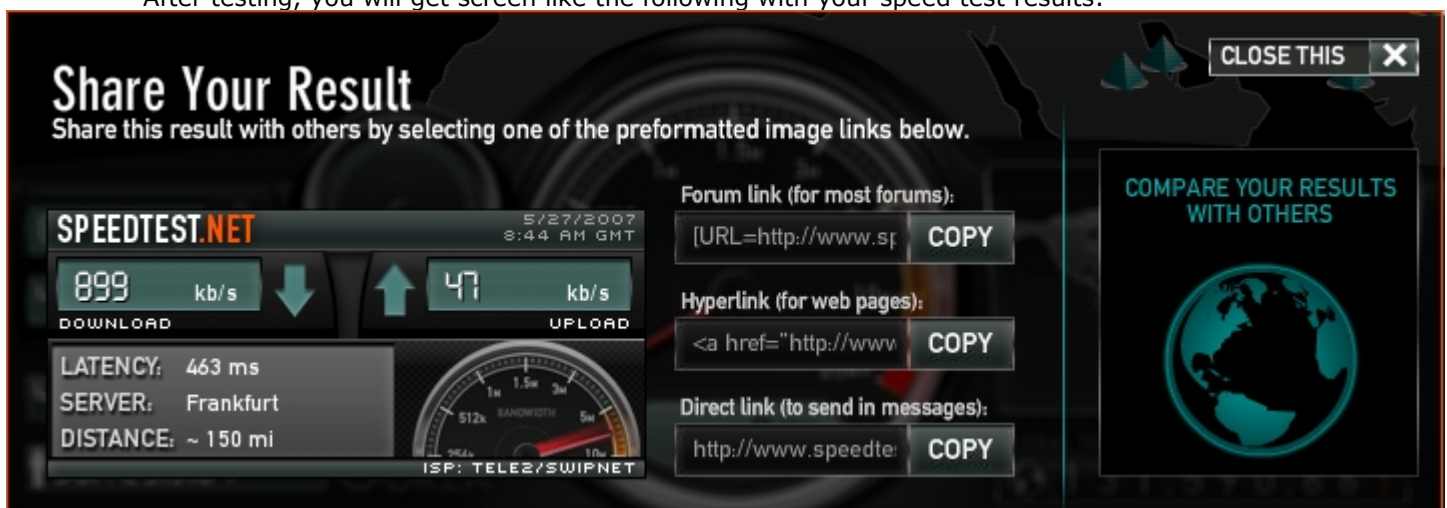


Now we'll test your broadband connection speed at Speedtest.net. We'll need this information later to configure Shareaza™. Use the following link:

<http://speedtest.net/>

...and start your speed test by clicking on the orange (=recommended) server on the world map...

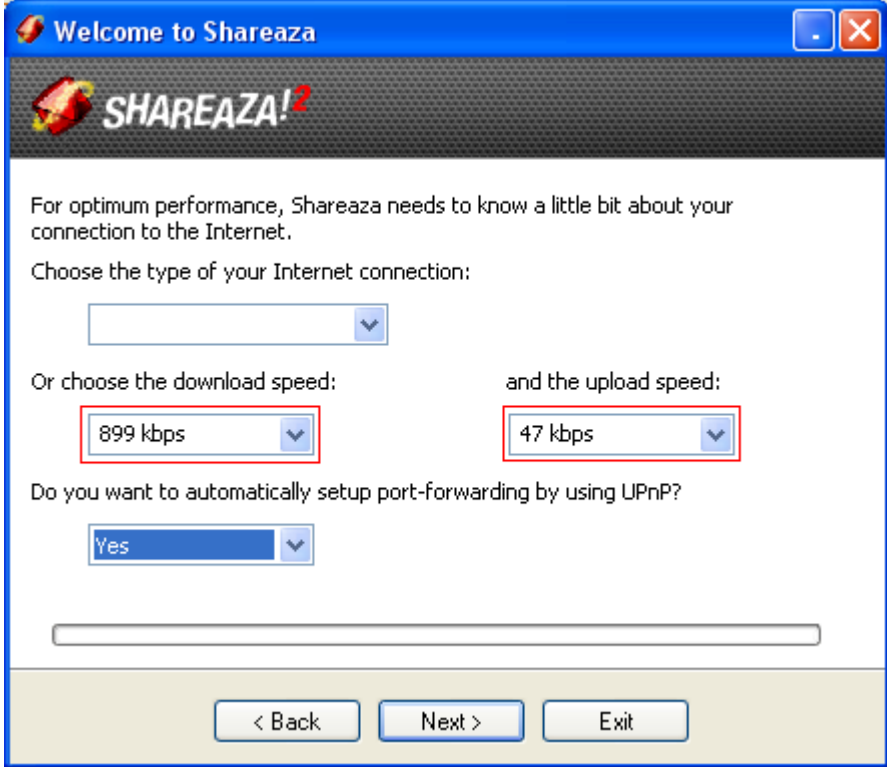
After testing, you will get screen like the following with your speed test results:



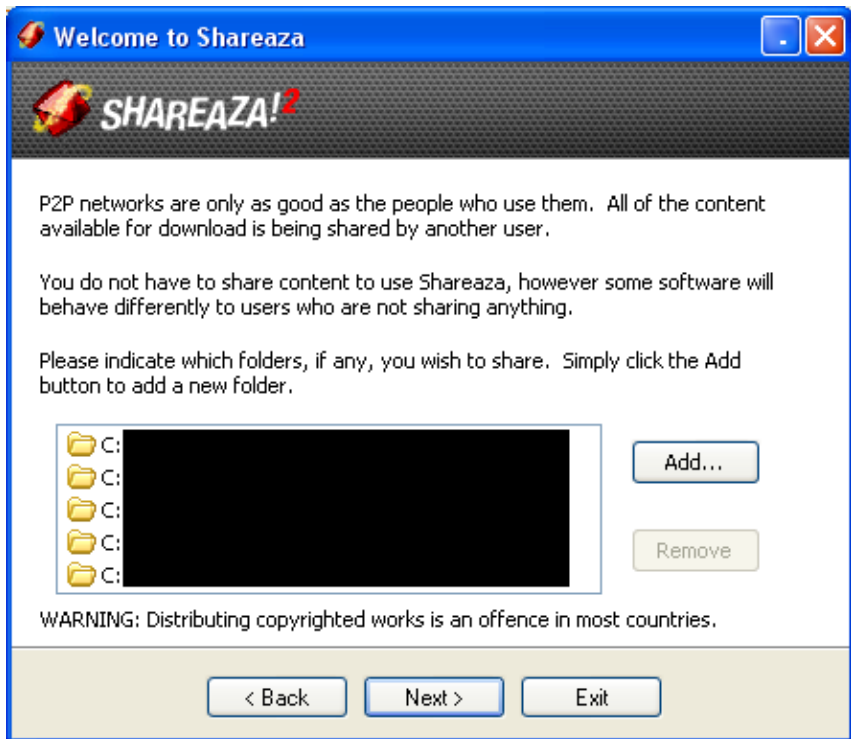
This picture shows my results...

...which we will enter now in the configuration wizard of Shareaza™. First click on "continue", then enter your test results like shown on the following picture (pay attention: there is a difference between bytes and bits. A byte has 8 bit. Which means 1KB/s = 8 kb/s. You may have to convert the values obtained before entering them in the form.

[You can change at a later time whether you want these values to be shown in kb or KB.]



Note: By using the Option to setup port-forwarding by using UPnP, you can set up your router if it is UPnP compatible. If your router does not support UPnP, you will have to configure it manually at a later time.



On the next screen, you can choose which folders you want to share via the P2P networks. Normally the only folder listed there should be the download folder of Shareaza™, which you have to share in order to use the program. If you don't want Shareaza™ to save downloaded files somewhere in your program files folder, you can now create a folder in M\$ Windows Explorer, for example on your desktop or inside your 'My Documents', and share it in this window. Later we will configure Shareaza™ to save your finished downloads to this folder.

Click "continue".

If you want to, you can now give some information about yourself to other users of the program. Be careful. Everybody can access the information you share here. On the other hand, having a nickname and telling others from which country you are has advantages, such as the ability of recognizing people from your own country in order to chat in your native language with you instead of chatting in English, this is why I recommend you doing so. If you want to have a look at which geographical information others entered here, you can visit [this](#) page of the trillinux G2 crawler 'g2paranha'.

Welcome to Shareaza (3/6)

SHAREAZA!2

Shareaza is a much friendlier place when everyone writes a few basic details about themselves.

I use the name:

and I'm a:

from:

< Back Next > Exit

On the next screen, choose "Power Mode". This will be very important afterwards, because it gives you lots of

additional options and settings to choose from. This is highly important in order to get the maximum speed out of the application at a later time. Please pay attention to choose on every screen that follows the settings AS I CHOSE THEM. Normally, there is a reason why I did it. If you don't want to let Shareaza handle your .torrent files and links (for example because you have another/better BitTorrent application), uncheck the respective option now.

Welcome to Shareaza (4/6)

SHAREAZA!2

Shareaza supports a flexible user interface, so you can choose what is most comfortable for you. You can change these options at any time.

Please select user interface:

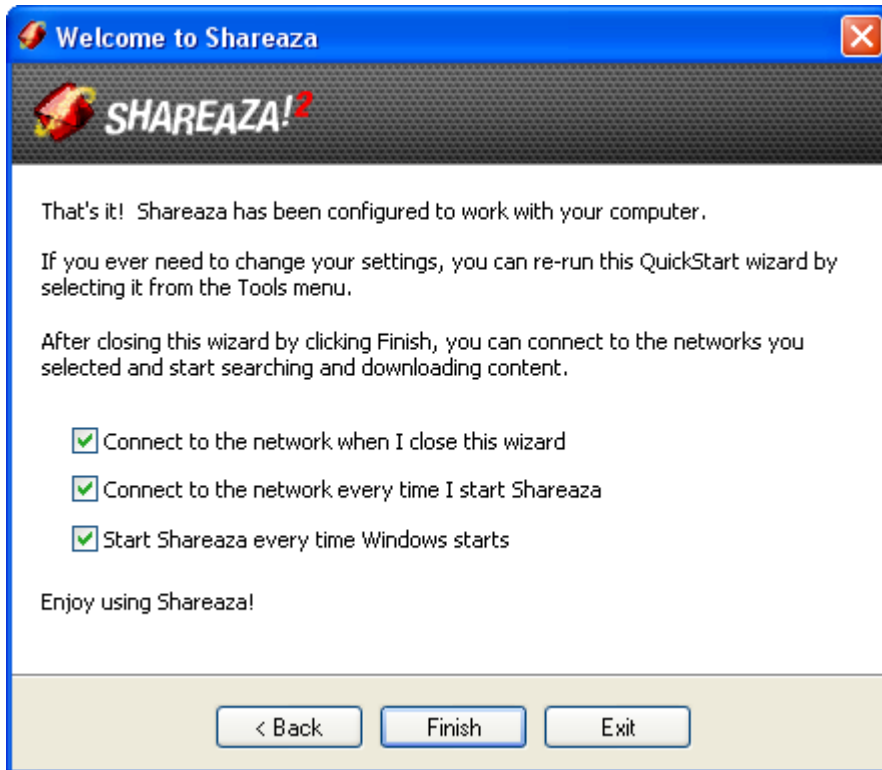
Basic Mode
Simple, easy to use menus and buttons.
Familiar to users of other file sharing programs.

Power Mode
Power mode offers expert users lots of extra commands, windows, etc.
It may be a little confusing for new users!

Display simplified download progress bars. (Reduces CPU use)

Handle torrent links.

< Back Next > Exit



On the next screen, choose "finish"...

TCPIP.sys tuning...

Now we'll do something which really increases download and connection speed for any P2P software, but which is unknown to most of the ordinary users.

We're going to tune the tcpip.sys file of your Windows (this is only for XP SP2/ SP3 and Vista users. Previous versions of Windows need no tuning; [Google this](#) for more information about Vista tuning)

More information:

Windows (after SP2) has a limit on the number of outgoing connection attempts per second. This slows down P2P software. To get full-speed, you will have to patch Windows.

Quotation from OldDeath: [Yes, that's me (=)]

Here some links for patchers or patched tcpip.sys files:

Vista

<http://www.mydigitallife.info/2007/04/09/windows-vista-tcpip.sys-connection-limit-patch-for-event-id-4226/>

WinXP

http://www.speedguide.net/read_articles.php?id=1497

<http://www.lvllord.de/>

WinXP x64

<http://www.isohunt.com/release/87235/Windows+XP+x64+sp2+event+4226+fix+tcpip+sys+patch+half-open>

<http://www.sephiroth-j.de/downloads/diverses.php> (go down on the website; works for me)

Source: [Shareaza™ forums](#)

The file that has to be replaced should be located in
%windir%\system32\drivers

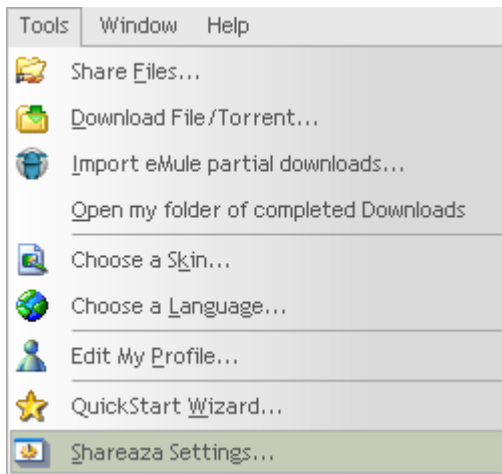
[%windir% normally points to the location of your Windows folder. This should be C:\WINDOWS on 99, 99% of all the PCs.]

If the patches above don't work for any reason, google for "tcpip.sys patched" or "tcpip.sys patch" and you will find what you need.

(Note: you will have to recheck this file after from time to time (after every Windows update) in order to re-replace it if Windows updater changed it back to the original version!)

[→ back to the summary](#)

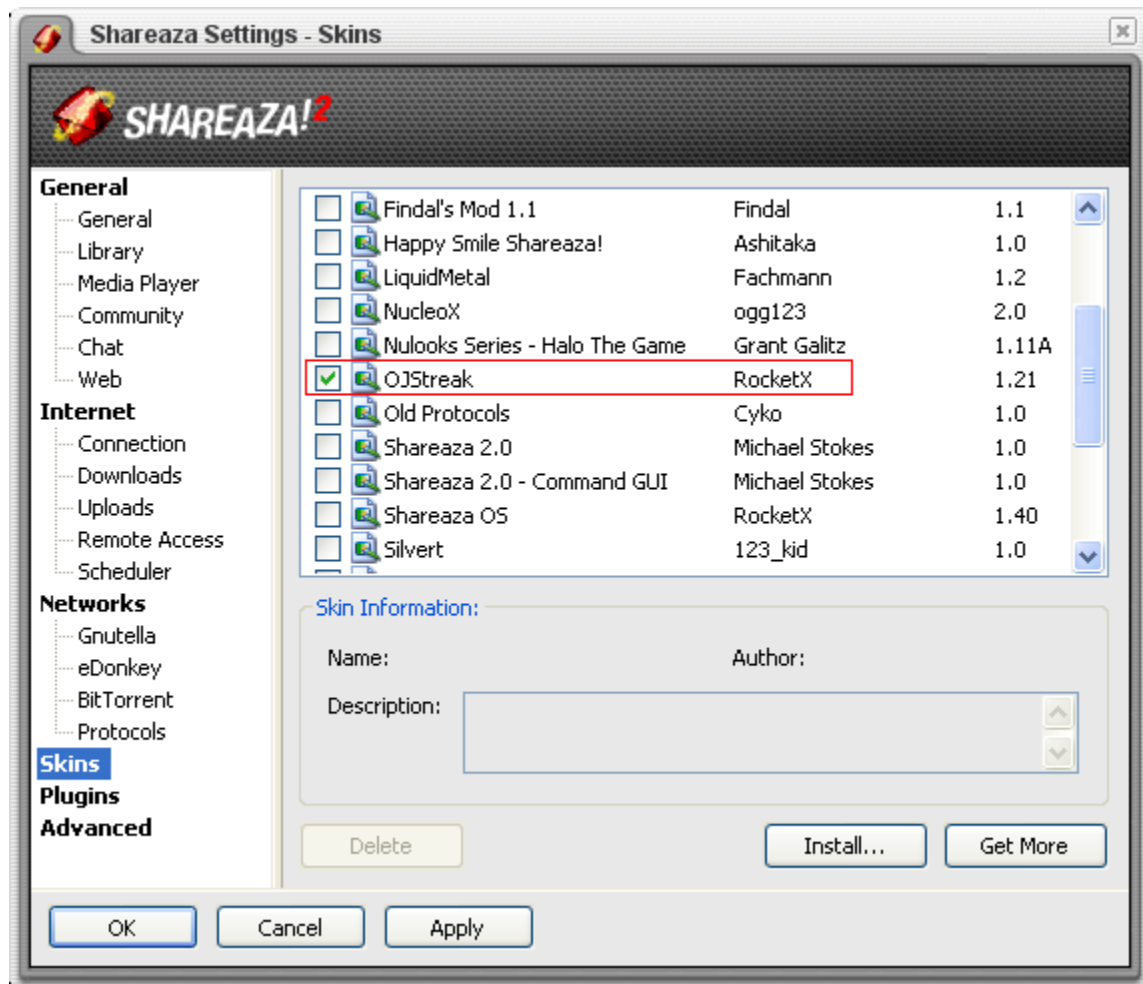
Take a deep breath... and now, **we'll go on on configuring Shareaza™ itself.**
Choose "Shareaza Settings..." in the main menu.



First, we'll change the visualization of Shareaza™ in order to make it easier to use. Later you can download visualization files (so called skins) from the web or from Shareazas P2P networks if you need / want to...

Please choose for this time the same configuration as I did, in order to make the following easier.

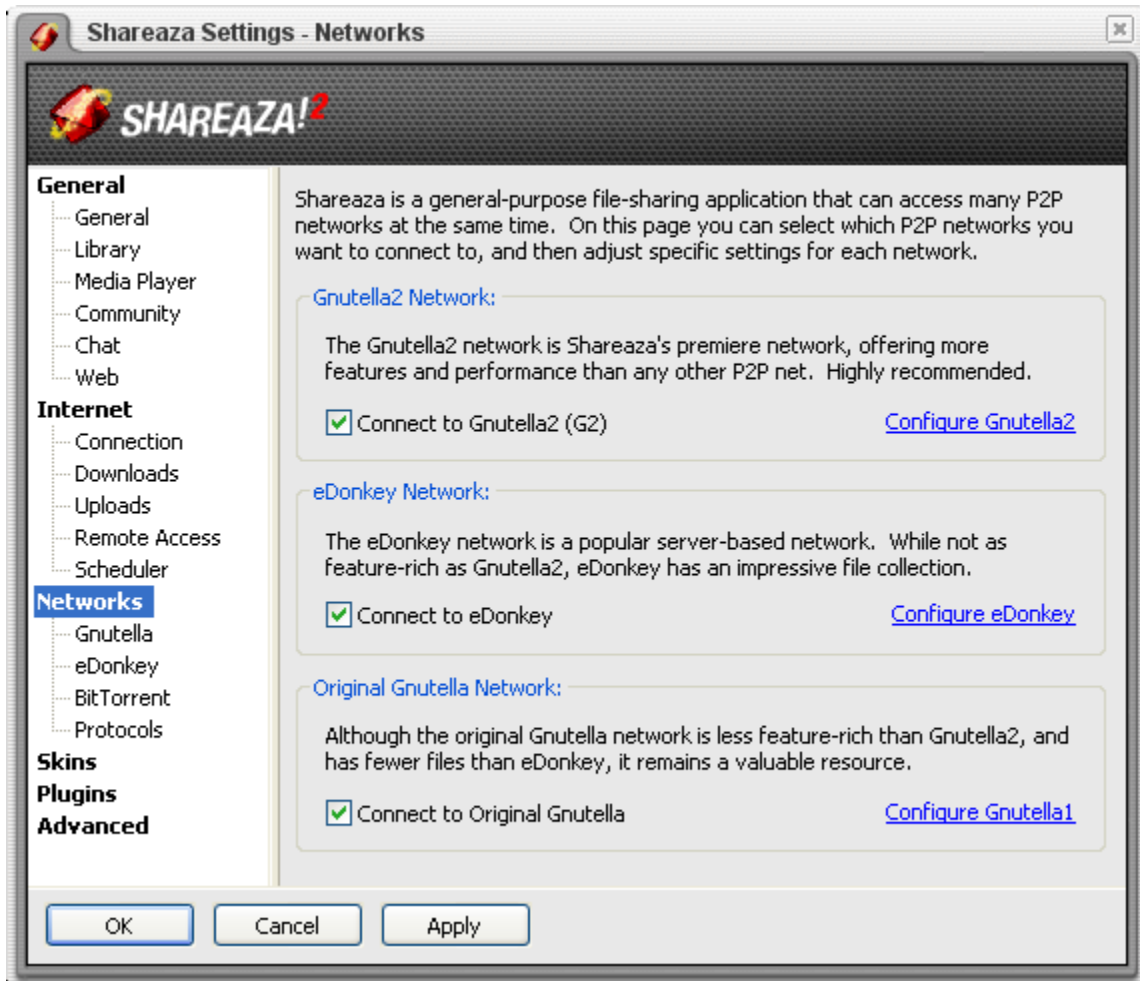
(If you do not choose the same skin, the screenshots will look different from what you see on your computer screen.)



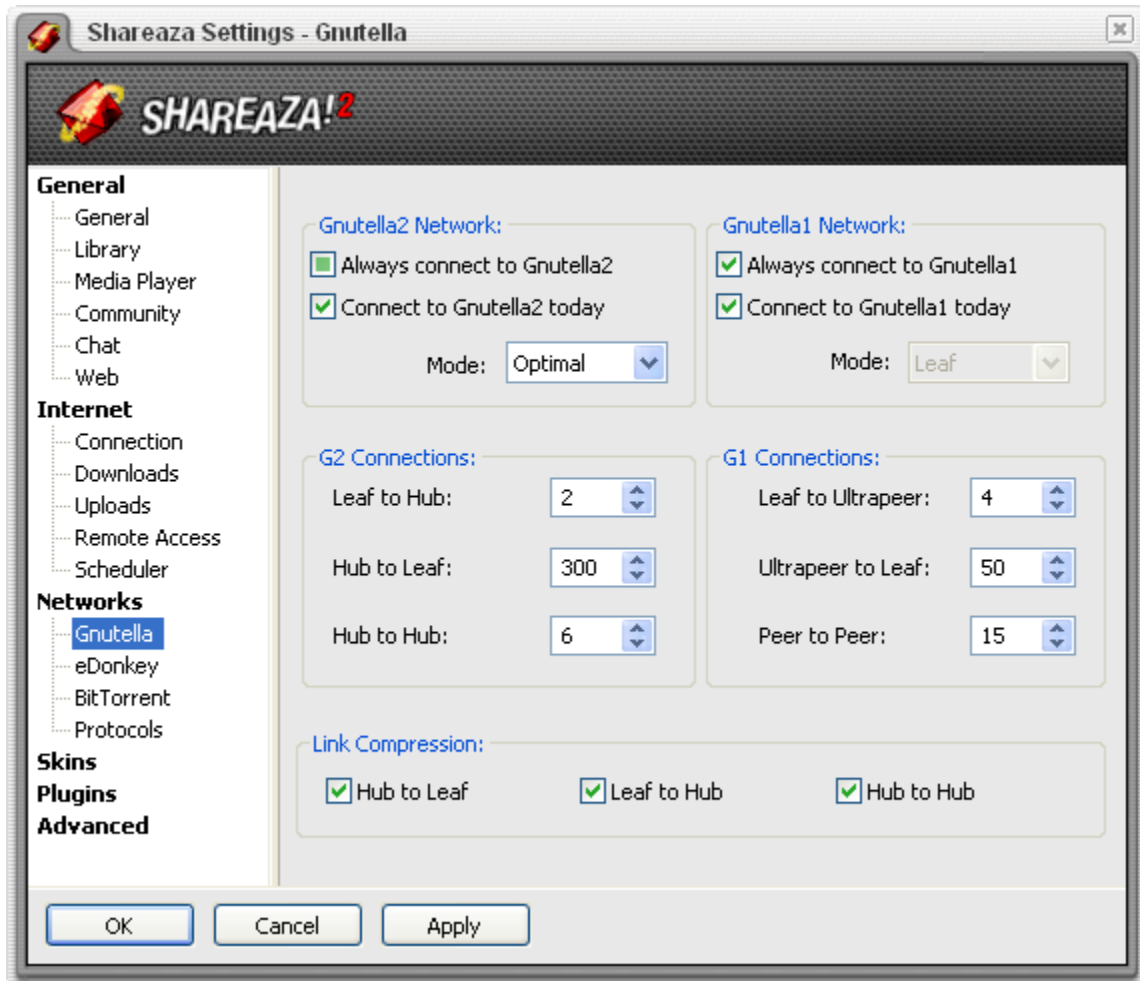
Hit "Apply"; the way everything is displayed should change a bit.

Now, we will configure the different networks Shareaza™ connects to...

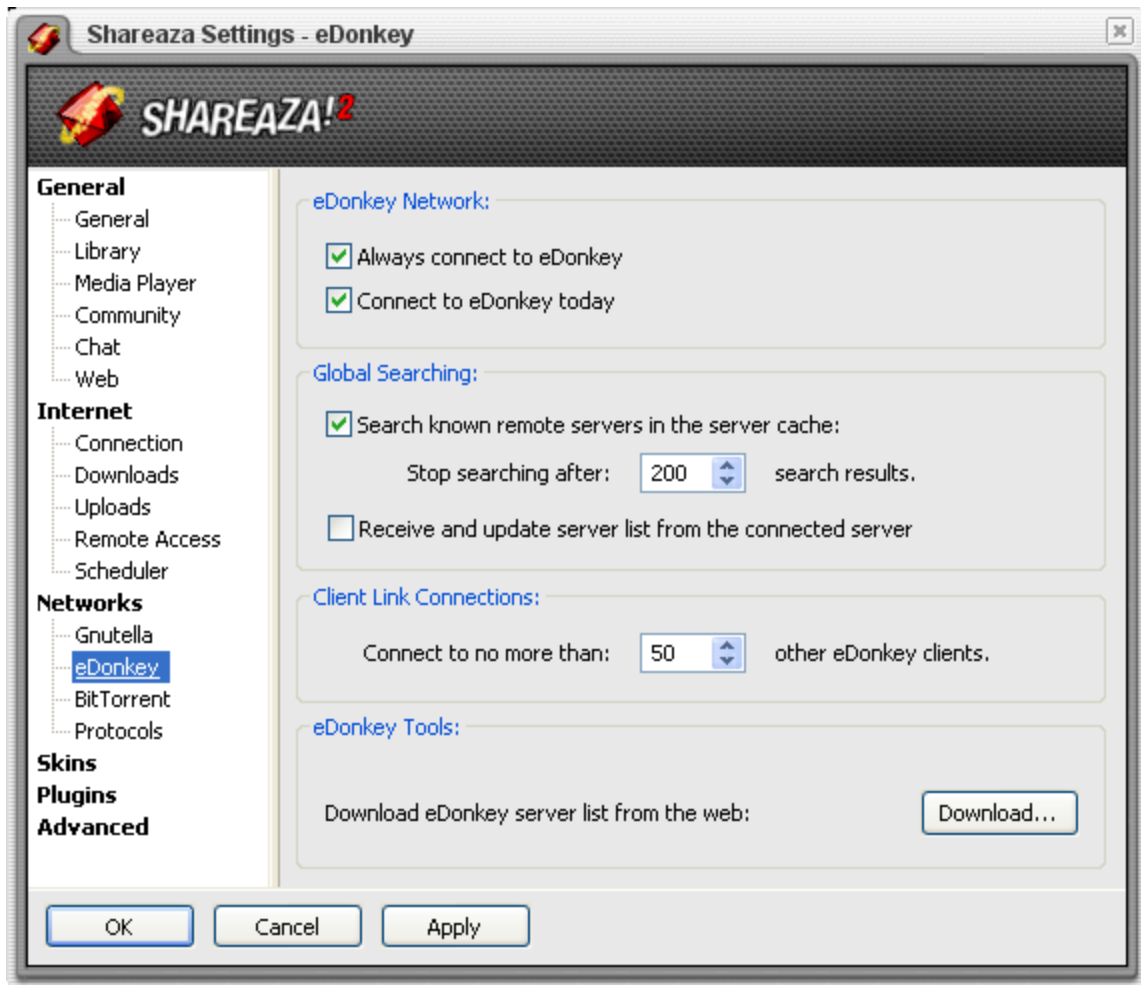
If you would like to know what they are mainly used for/optimized for, have a look at Section 3 of this document.



Make sure every of the three networks is checked in order to get the maximum speed out of your downloads.



Note: If you don't have a broadband connection DSL+, you should decrease the "Leaf to Hub" and the "Leaf to Ultrapeer" settings to 1 respectively 2 connections. On Gnutella2, the number of connections generally does not influence your search and download speeds. This is not the case on Gnutella1 (G1), where more connections may (but don't have to) increase the number of search results a bit.



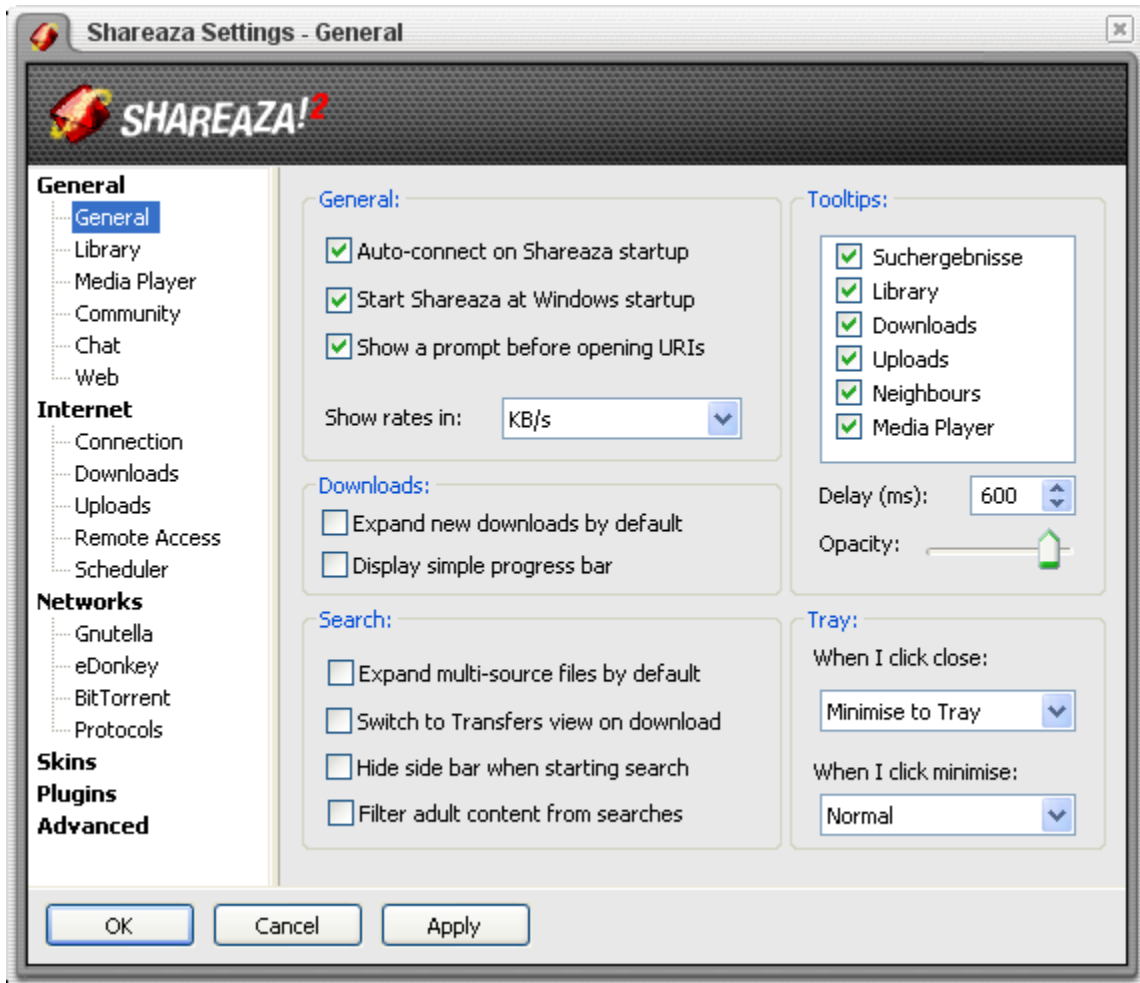
Make sure that the option to automatically receive and update the ed2k server list is unchecked. This is an option crucial to Shareaza's security to avoid connecting to fake/spy servers on the ed2k network. Note that you may have to update your eD2k server list in your host cache from time to time manually because of this.

If you have a fast Internet connection (DSL 2k+), you can increase the number of client connections to higher values (f.ex. To 100).

Let's continue with some supplementary configurations...

Choose them as you need them; here you can also configure whether your bandwidth speed is shown in kb/s or in KB/s.

An interesting option to try out is the "Switch to Transfers view on download". Once disabled, Shareaza does not switch anymore automatically to the transfer window once you clicked at a file to download it (f.ex. in a search window), which makes possible to choose several files to download one after the other without having to switch back to your search window every time you selected one.

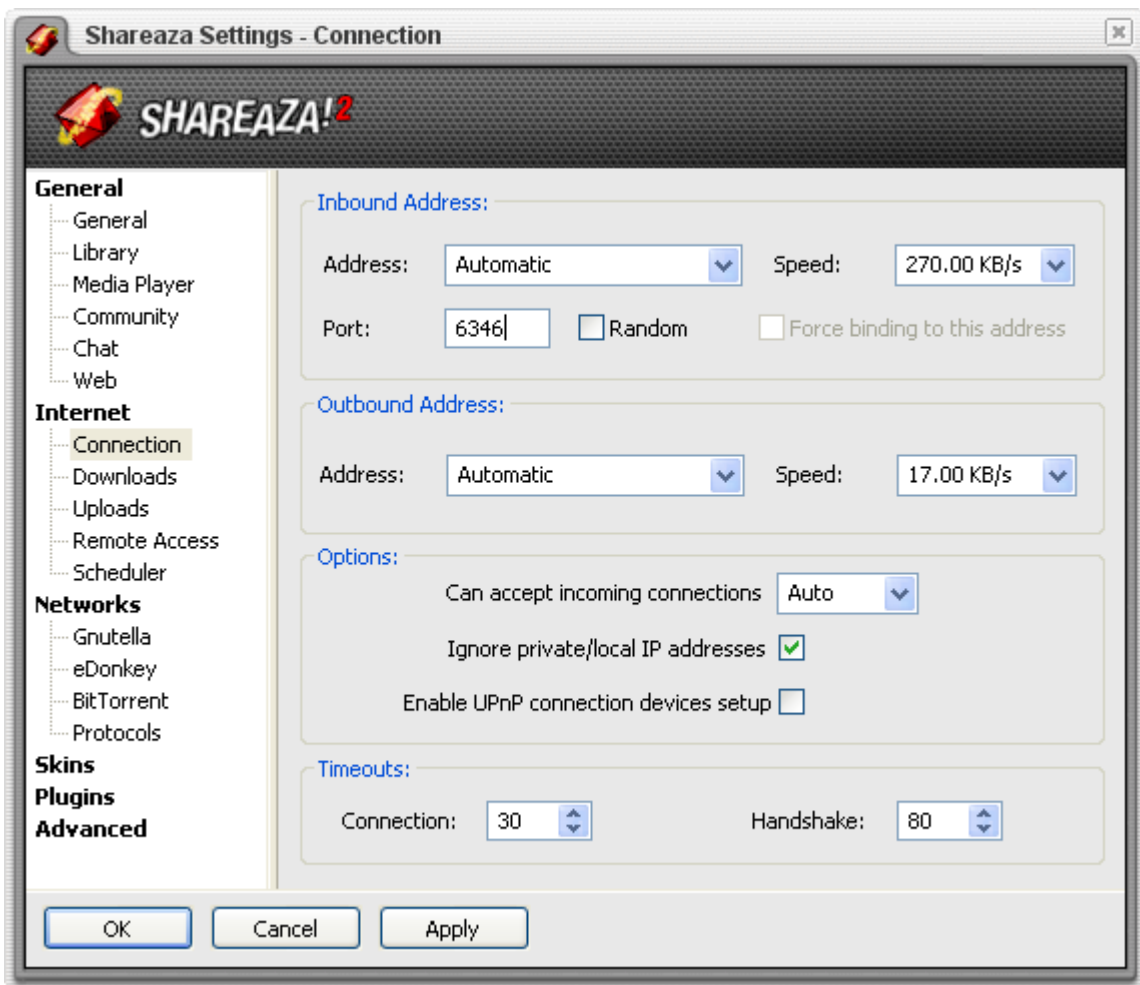


...followed by general connectivity settings...

Normally Shareaza should have configured these settings according to your environment during the quick start wizard and therefore you shouldn't change them, if you don't know what you are doing.

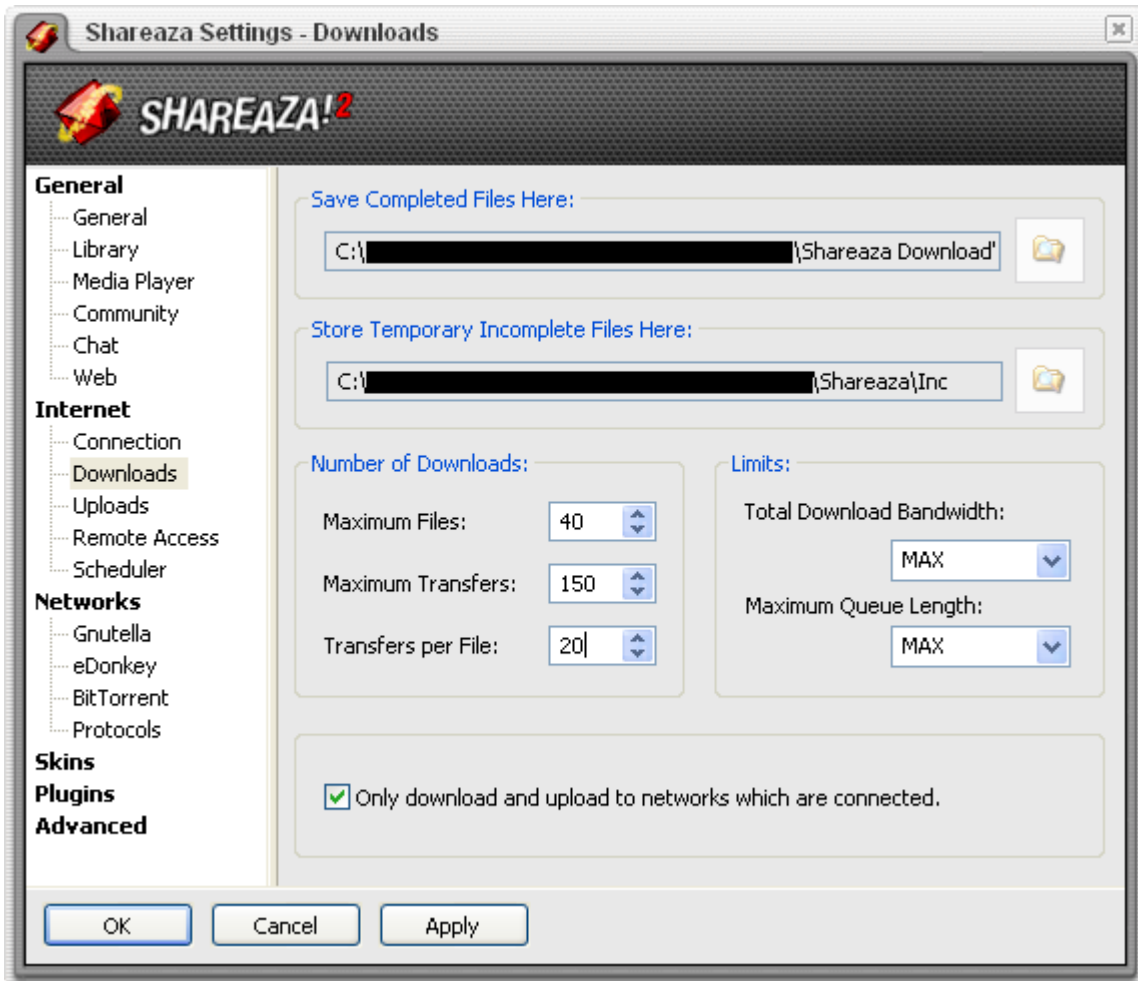
That's why I strongly consider leaving the default values for the Timeouts for example, because with these settings, you can break your connectivity to the networks completely.

The only two things that are really interesting on this page are the "Port" field, where you can choose the port Shareaza uses to transmit its data. This is the number that has to be entered for example in the connection tests in order to check whether Shareaza connects properly or not. Remember: On shared Internet connections, you cannot use the same port for two file sharing applications on more than one computer. (Have a look at section 3 for further explanations). The other thing you should know is the UPnP checkbox (disabled on the picture). With this checkbox, you can make Shareaza try to set up your router (and other networking devices) correctly for port forwarding (only if your networking devices [router, NAT,...] support UPnP).



* If you created a folder for your downloads to be saved in (other than the one in your program files directory), click now on "Downloads" (on the left side) and change the folder where your downloads are saved. If you don't want to share your downloads with all the people using the same computer (e.g. if you want to have separated Shareaza accounts for every user), make sure that Shareaza does not save its incomplete files inside the 'Program Files' folder.

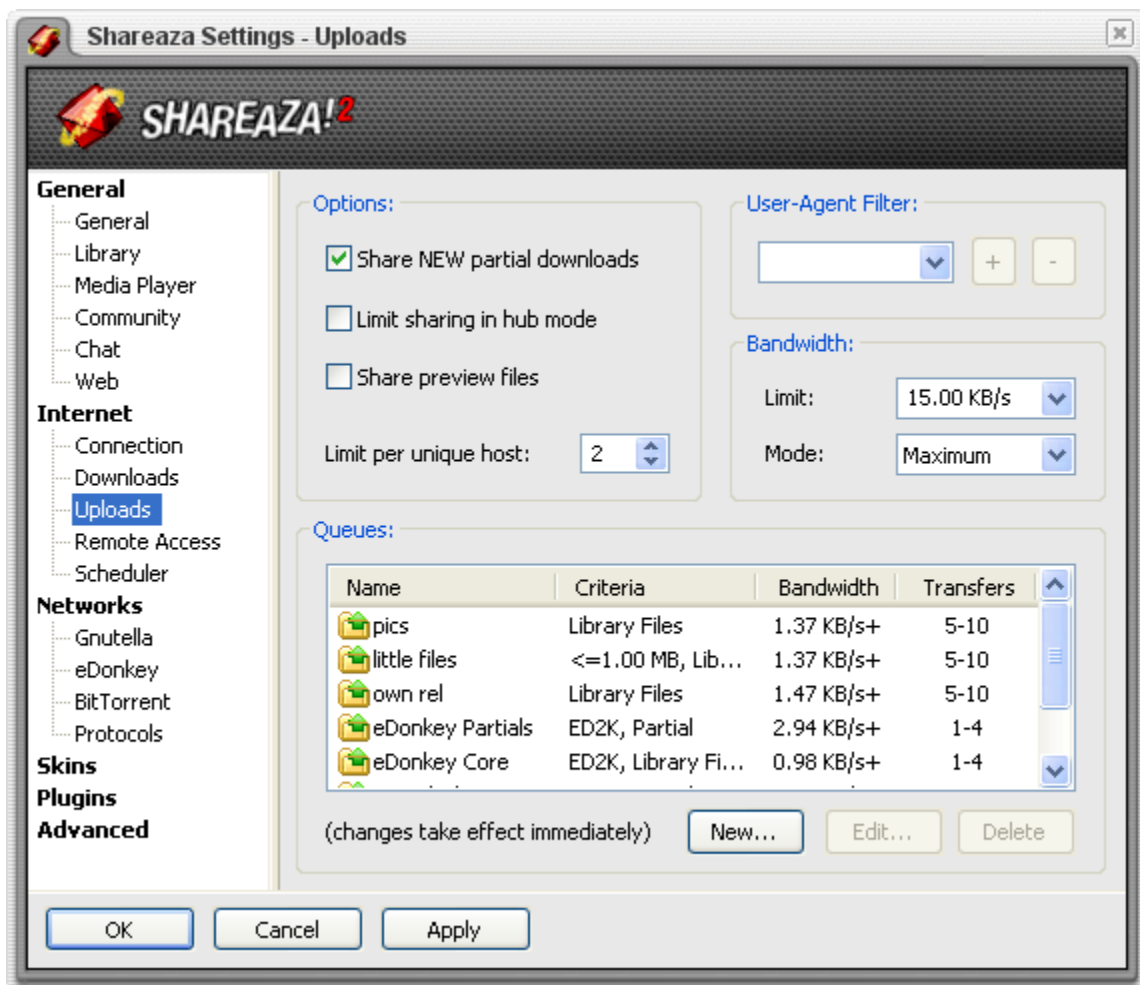
* You also should increase the settings in the 'Number of Downloads' called section. Note that you should generally not exceed the values shown on this picture, because higher numbers will cause Shareaza to need really much of your computer resources and therefore it can even hang other applications. Also having too high numbers entered here can cause non-functionality of your normal Internet, so you won't be able to surf through the net or will get permanently 'the operation timed out' or 'server could not be located' error messages and similar stuff.



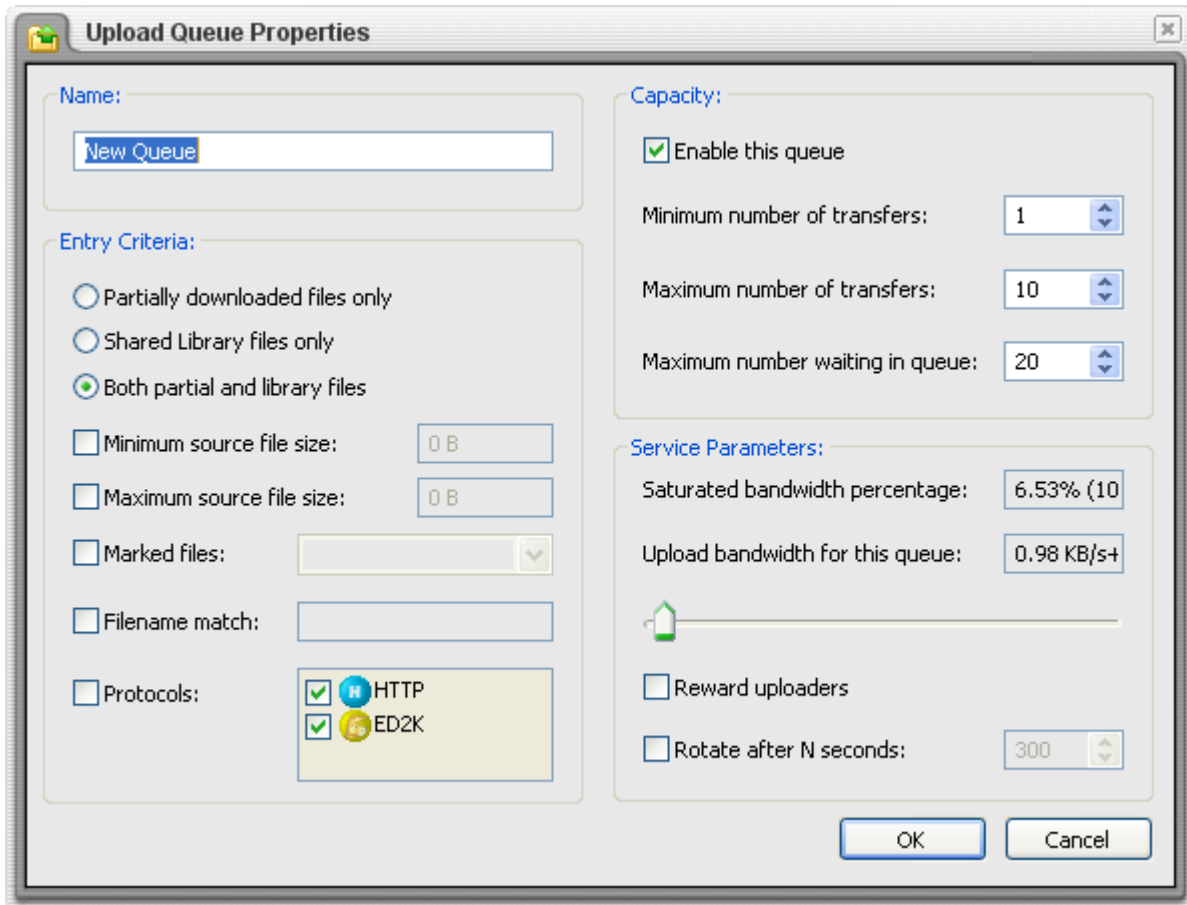
Now, we will configure the way how Shareaza uploads files. Whether you want to limit sharing in Hub mode or whether you would like to share preview files, is a personal decision, do it as you like it... With the user agent filter, you can prevent other clients to connect to you depending on their client name. For example, you can add "bearshare" and "dianlei" to the list, because BearShare is not good for the G1 network, and dianlei is a fake application based on Shareazas source code.

Here you can also limit your uploading bandwidth, if you need to. The Limit field is either blank or shows a default value calculated on the basis of what you entered in the quick start wizard. Normally, it should be just fine as it is. Remember that by limiting your upload bandwidth, you will also get limited downloads as a result, because some networks limit the amount you can download from them based on the amount you upload to them. That's why I also consider you leaving the default value. The two upload modes, Maximum and Average are used to tell Shareaza how you want your bandwidth to be limited. By choosing Maximum, Shareaza doesn't exceed the value you enter, by choosing Average, the real upload speeds varies a bit under respectively above the limit and keeps the limit as average. (This was what these two modes are supposed to do. In reality, this feature doesn't work so choosing one or the other doesn't change anything :p)

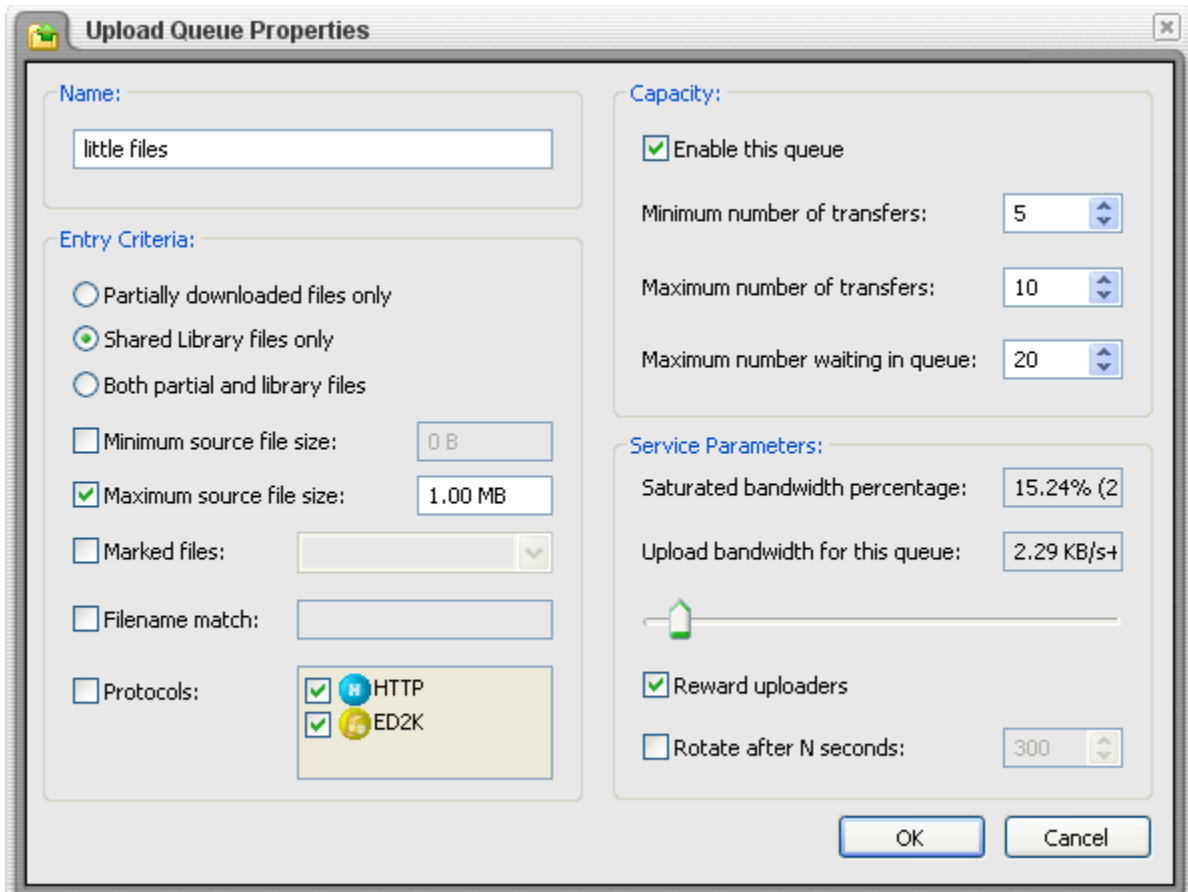
In the Queue list, you can control how Shareaza uploads files and which network gets how much of your total upload speed. Remember, these values are all only average values and Shareaza may exceed them if the actual situation causes a need for this. Also, since not always all queues are used, the speed of the unused queues is divided between the active ones.



In order to make Shareaza work more efficient, we will add now a new queue for little files.
Click on "New..."
The following window should open:



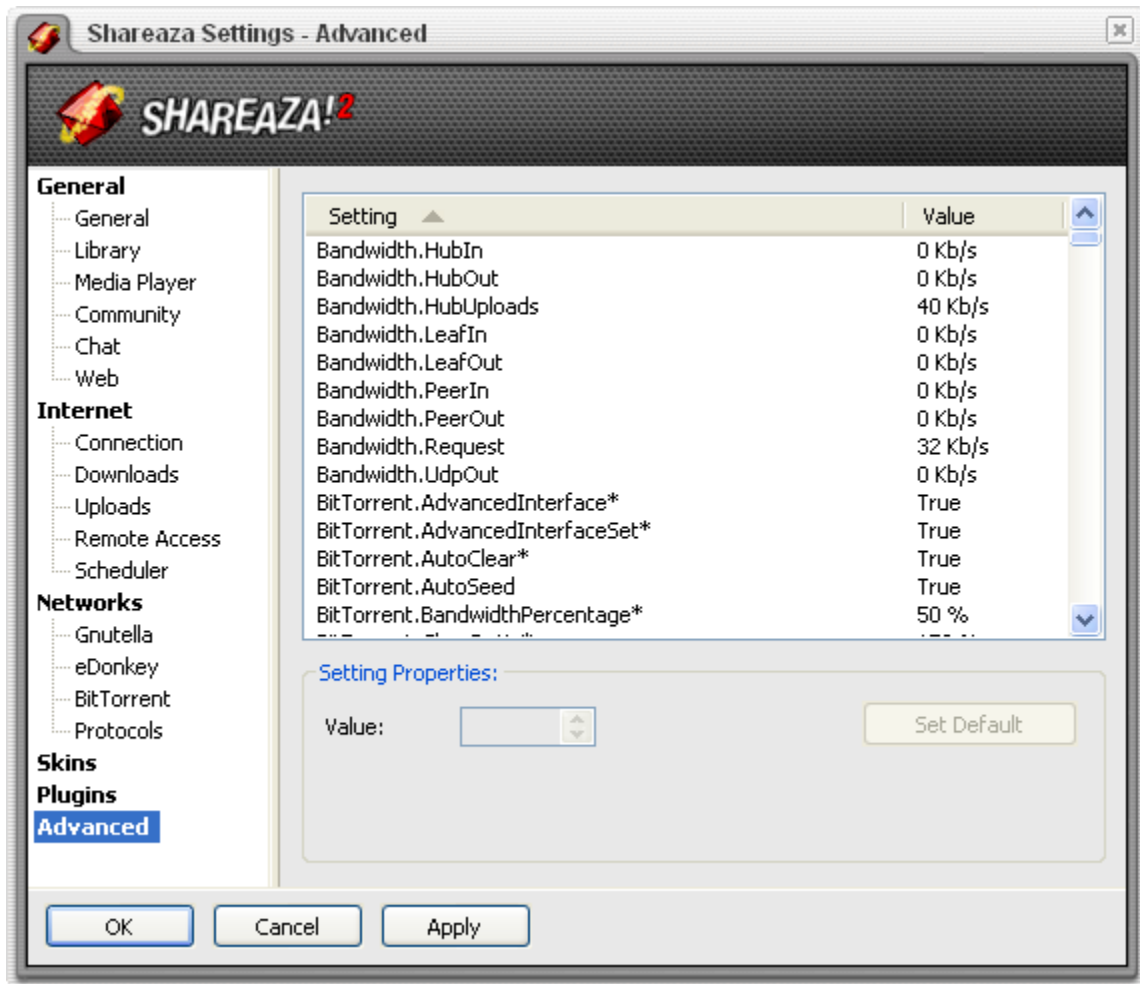
Now change the values, as shown on the following picture. Make sure the new queue has at least 15% of your bandwidth and set the maximum source file size to something between 1 and 2 MB. Copy the other settings from this picture:



Once you finished, hit "OK". A new queue has been added to your queue list.

Now, move on to the advanced settings.

(Don't look at the picture; it is only there to show you where to find/access these settings.)

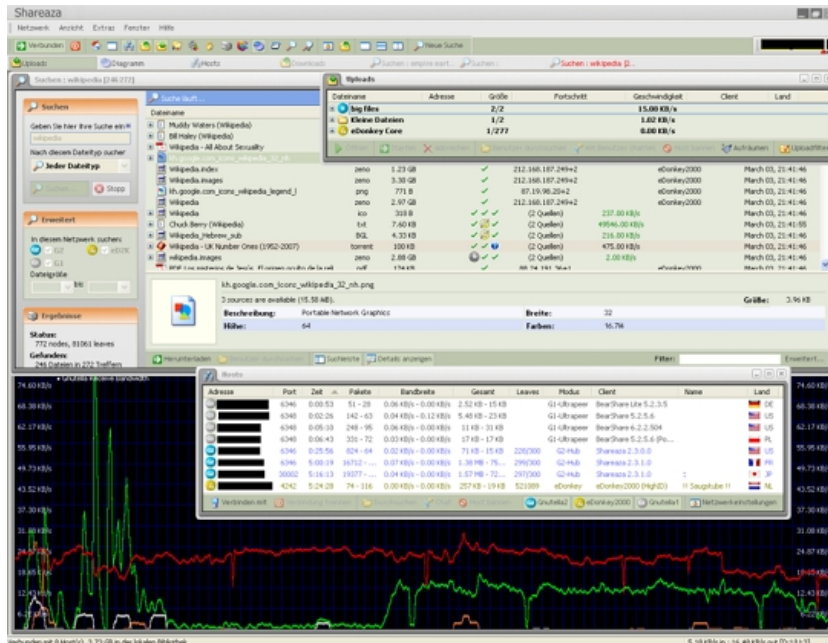


We will change the following settings:

- **BitTorrent.BandwidthPercentage** to something around 50% (May be a bit more or less, doesn't really matter.)
- **Discovery.EnableG1GWC** to 1 (true)
- **General.IgnoreXPsp2** to 1 (true) (only if you patched your Windows previously, which I strongly recommend you)

There are many other options available Shareazas settings. Try them out if you want, but leave your fingers from the advanced settings unless you know very well what you are doing, because you can break connectivity, or even manage to crash Shareaza at every startup, depending on what you are doing. (Search the Shareaza™ Wiki for an explanation of their usage).

...so far, so well... Now you **can** choose an other option for the program's interface to behave; "Windowed Mode" (can be accessed under the menu "View") will make at first view everything more complicated, but if you once have organized the program windows like you need them, this will improve enormously the way you can interact with the software...



[click to get a larger version]

Picture 2 shows an example of a modified Shareaza™ (several Skins running & Windowed Mode with some opened windows)

[→ back to the summary](#)

View	Tools	Window	Help
	System		F11
	Neighbours		Ctrl+F11
	Downloads		F3
	Uploads		F4
	Library		F5
	Media Player		F6
	Security		F7
	Host Cache		F8
	Discovery		F9
	Graph		F10
	Packet Dump		Ctrl+F1
	Search Monitor		Ctrl+F2
	Hit Monitor		Ctrl+F3
	Normal Mode		
	Tabbed Mode		
<input checked="" type="checkbox"/>	Windowed Mode		

Now, there are only 4 things of importance left:

1. You will have to **configure your firewall**

Look here for more information: [\[Shareaza Wiki\]](#)

2. You will have to assure that your **router** (if you have one) **is configured correctly**

Check out <http://portforward.com/> for specific manuals about how to configure your router to forward traffic to Shareaza. (Have a look at section 3 of this document, too.)

Read this for more information: [\[Shareaza Wiki\]](#)

3. You should **add some more GWCs to your service provider list** in order to have a better connectivity to other clients.

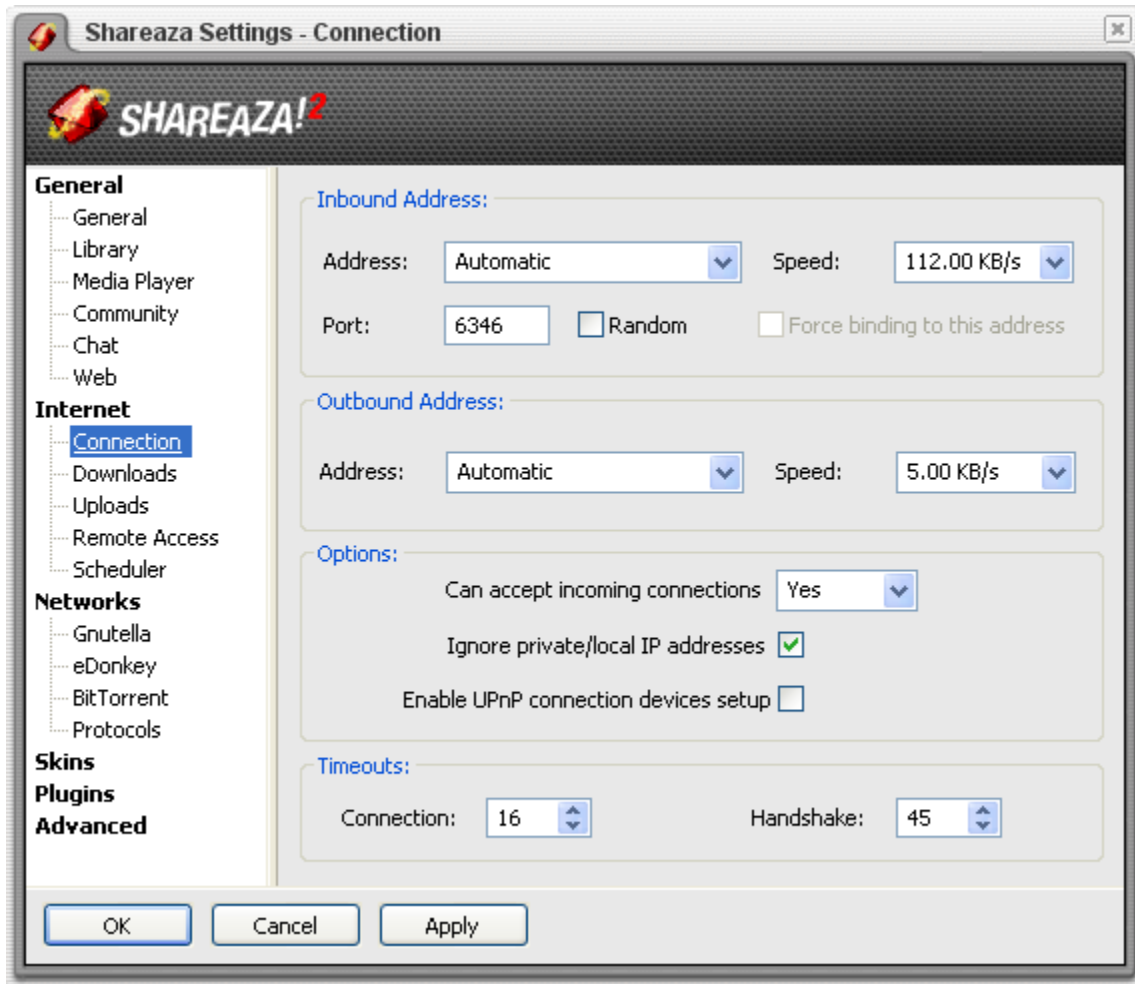
[GWC list by OldDeath](#)

Press F9 on your keyboard while being in the Shareaza™ application, go to "view" and choose "discovery" or use the little defrag icon on the control bar. Right-click in the new opened window and choose "add service". Enter an URL from the list and press OK. (Make sure to choose the right URL type.) Repeat this until you have at least 5 new gray ones (Gnutella1 /G1), 5 new blue ones (G2) and (optional) 2 green ones (server.met) in your list. Query them all by right clicking on them and choosing "query". After this, delete those with no sources (do

NOT delete the blocked ones!), close the window and restart Shareaza™. [A more detailed step-by-step explication of this can be found in the same location as the download.] You can also replace the DefaultServices.dat file in you Shareaza application install folder (again, have a look at the more detailed descriptions at the download location.).

4. After you have closed everything and restarted your computer (or at least Shareaza), **test if everything works correctly:**

Click [here](#), [here](#) or [here](#). The port number you will have to enter in the field on one of this websites can be found in the settings menu under Internet\Connection (normally, it is 6346):



Attention:
If you don't pass this test, you will NEVER get out more than 60% of the potential speed out of Shareaza!

If you don't pass it, revise your settings (router and firewall) to check where the problem comes from:

- Disable any security related software such as firewall and anti virus applications. Run the test again. If you pass it now, the configuration problem is to be searched on that software.
- If you don't pass it, disable also any application other than Shareaza and try it again. If you pass it now, there is one of the other applications causing problems.
- If you don't pass it after the last step, the error comes in 99,99% from your hardware: either router, modem or NAT (it depends on what you have). So you will have to revise their configuration. Please note that only one computer inside a

network can use a specific port for Shareaza. So if you have 2 computers both configured to use port 6346, one or both will not work/download/upload correctly.

- Also pay attention that you will have to forward the information in some cases from one device to another and from this second device to the computer where you are using Shareaza. This is *only if you have 2 devices connected one after the other* (for example Internet → DSL modem → (Wireless-)Router → Computer with Shareaza)
- If you don't pass your test after having everything triple checked, go to our forums and [ask for specific help](#).

[→ back to the summary](#)

Additional security

Such as everywhere else in the World Wide Web, you will also find viruses, spam or spy- and malware in the Shareaza™ P2P networks. To avoid this and also to ban anti-P2P-companies from accessing your computer, a bit additional security is always good.

General information about this subject can be found [here](#).

1. PeerGuardian2

PeerGuardian2 is a firewall based on IP blocking, which means it blocks unwanted IPs at kernel level. This means your computer refuses to connect to certain IPs which increases your security. This software is THE P2P security program, but it also prevents you from downloading shit from the Internet and blocks some advertisements...

Development: Phoenix Labs

It's an open-source software.

Further information & Download [here](#)...

... and [on Wikipedia here](#).

2. Shareaza™ security filters

Block lists includable in Shareaza™.

Get them in the [appropriate forum section](#) and import the downloaded .xml file(s) in the Shareaza™ security window (F7). (First delete all existing entries in order to get rid of old, unwanted ones, then right-click in the window and choose "import" [...])

More information can be found [here](#) (Shareaza™ Wiki). You may need a working version of Shareaza™ in order to download some of the files.

3. Firewall & Anti Virus

This should be standard on every computer... But since apparently not everybody has understood this yet, I thought I should repeat it at this place an other time... In the worst case, use the M\$ Windows firewall; this is better than using no one at all...



Windows Firewall

[→ back to the summary](#)

IMPORTANT: After all these changes and installations you need to restart your computer to assure them to take effect on your OS.

SECTION2: FAQ and troubleshooting...

Some of the content in this section has been originally written by seli and only been updated by me and can be found [here](#) in the Shareaza forums, too.

Official Shareaza FAQ

It can be found [here](#).

Windows XP SP2/3 & Vista connection limit

Have a look at the description [here](#).

Troubleshoot: Are my router and firewall set up correctly?

- * Do a connection test. Either use the build in option (Help >> Connection Test) or use one of the tests listed [here](#).
- * There are two options: Either everything is green. Good! Everything is fine. Stop reading this document and enjoy filesharing. If this is not the case continue reading... :p
- * Try a second connection test in order to check if it gives you the same result.
- * Check if you used the right port for testing (if you did it manually)
(Shareaza Settings >> Internet >> Connection >> Port)
- * Follow these steps:
 - Disable any security related software such as firewall and anti virus applications. Run the test again. If you pass it now, the config problem is to be searched on that software.
 - If you don't pass it, disable also any application other than Shareaza and try it again. If you pass it now, there is one of the other applications causing problems.
 - If you don't pass it after the last step, the error comes (99,99%) from your hardware: either router, modem or NAT (it depends on what you have). So you will have to revise their configuration. Please not that only one computer inside a network can use a specific port for Shareaza. So if you have 2 computers both configured to use port 6346, one or both will not work/download/upload correctly.
 - Also pay attention that you will have to forward the information in some cases from one device to another and from this second device to the computer where you are using Shareaza. This is *only if you have 2 devices connected one after the other* (for example Internet → DSL modem → Router → Computer with Shareaza)
 - If you don't pass your test after having everything triple checked, go to our forums and [ask for specific help](#).

“Why should I do this?”

The answer is really simple: If you don't pass the connection test, others cannot properly connect to your computer (and vis versa) which causes your downloads to be slow and your search results to be (very) limited compared to others. You will never get more than 60% of the potential maximum speed out of Shareaza.

Clean install

- * Move the Downloads and Incomplete folders to a new folder. (Cut and paste)
- * Uninstall Shareaza.
- * Delete the Shareaza install folder and delete the hidden folder in
C:\Documents and Settings*yourusername*\Local Settings\Application
Data\Shareaza
(%appdata%\Shareaza)
- * Delete all Shareaza settings that might still be inside the registry of your computer
START >> Run >> type “regedit” (without the “”)s)
Navigate to:
HKEY_CURRENT_USER\Software\Shareaza
and delete everything you can find inside this tree folder.
**DO NOT DELETE ANYTHING ELSE. THIS MIGHT CAUSE BIG
PROBLEMS.**
- * Use a registry cleaner such as CCleaner to get rid of registry junk that might still be there.
- * Reboot
- * Download Shareaza and install it.
- * Start Shareaza and run the wizard as normal. Use the install guide provided in the section above.
- * Move the Downloads and Incomplete folders back to the respective locations that have been set in the Shareaza settings.
- * Restart Shareaza.

Source: Originally written by seli (Shareaza forums); edited by OldDeath

“Why should I do a clean install?”

A clean install makes sense in two scenarios: Either your Shareaza crashes at startup/ nothing works anymore (e.g. no downloads, no connection to the networks etc.) or if there are suddenly problems after upgrading that might be caused by settings and data files remaining from the old version that don't work correctly with the new version.

How to open Ports & terminology

* **IP** stands for **Internet Protocol**.

All computers are assigned a unique identifier called an IP address.

IP addresses are used like street addresses so other computers can locate them. For example, an IP Address may look something like: 56.234.22.12.

If you have a router/modem it receives your IP from your Internet service provider (ISP). A dynamic IP changes every time you connect to the Internet, a static IP stays the same.

* **Traffic in and out**

When your computer tries to send data to a computer outside, it sends the data through the router (in most of the cases). The router (the gateway) receives the data from your computer and sends it out to the receiving computer on the internet, adding information about your IP and what port to use.

It's the same way when receiving data: The data is sent to your router, which forwards it (according to the information the sender adds to his data) to your computer.

* **Port Forwarding**.

Port Forwarding simply tells the router which IP and port to use to forward incoming or outgoing data to and from your computer. Port Forwarding rules are created per port. So a rule set up for port 4400 will only work for port 4400.

If you don't set up port forwarding, data coming in or going out will stop in the router.

* **Ports**

A port can only be used by one program at a time!

When your computer/program tries to use port 4400, it sends the data to the router; if you haven't set up port forwarding on port 4400, the data stops there. (The router doesn't know what to do.)

Using port 4400 on two computers/programs at the same time will violate the "one program rule", and your data would get messed up. That's why you have to open several ports, one for every program which needs port forwarding.

* **Port numbers**

Port numbers in the range 0-1023 are usually used by Windows and other OS related products.

Port numbers in the range 1024-49151 are ports widely used by web servers, P2P applications, IM clients and On-line games.

Port numbers in the range 49152-65535 are private/dynamic ports, not used by any defined application.

I always say that you can use anything from 2000 and up.

* **On your computer**

It is very important to set up a static IP address, if you are going to use port forwarding.

You are not supposed to set the router to receive a static IP, but you have to set up a static IP for your computer(s).

Setting up a static IP ain't hard, and there are guides for all operating systems.

Usually we provide links to guides on how to set up port forwarding, which also tells you how to set up the static IP.

* All of this **applies to your software firewall** too!

If you open port 4400 in your router, you also have to open it in your firewall, because otherwise, the data will be stopped by your firewall.

* Check out this [overview guide](#) and [PortForward.com](#) for specific guides on how to configure your router and on how to set up a static IP on your computer.

Source: Originally written by seli (Shareaza forums); edited by OldDeath

[→ back to the summary](#)

SECTION3: Using Shareaza...

In this section I would like to share some interesting concepts, cool tweaks and knowledge about some interesting functionalities integrated in Shareaza that most of its users are not aware of.

* **Let's start with those things apparently not everyone is able to understand:**

The concept of P2P is the concept of a community, it's not only about getting your favorite music and movies. If you move through a P2P network (either by searching, having a look at the file directory of others, downloading and uploading or simply chatting with people you are exchanging files with), you move through a community of equals. Generally speaking, everyone has the same rights... and obligations. You might wonder now: "What the hell is he talking (writing?) about?"

To answer your question: I am talking about several things: The first thing is the importance of uploading. You are only able to download files, because there are others who upload them to make it possible for you to get them. If nobody uploads, you won't download either. There are no 'servers' or similar structures to upload the stuff on the networks to your computer, but this is all done by people like you. What I want to explain here is that it is important that you also upload files to the network. If you don't do this or if you are only giving the network a crappy upload bandwidth, you harm the network, because you take something away without giving something back. That's why you always should try to upload at least as much as you download. Remember always, that at every moment there are others getting files from you, as you got files from them before.

A second thing which should be named here is the behavior after a download. For example if it is a fake one, always rate it as fake to tell others about it to prevent them from downloading the same sh*t nobody needs. It's the same for files which contain viruses or other malware. But this does not stop here: A really good user rates all the files he downloads, to make others know about the quality of the respective file(s). And remember: you cannot only choose 1-5 stars, but you can also put a personal comment below it, which makes evaluating the information provided through your ratings more easy for others.

The last thing I would like you to remind is that filesharing / P2P is not 'only' something you do... others do... and much more people do... but it has become part of our culture in some way; At least part of our youth culture. Right now, at the moment you are reading this, things are changing because of it. This does not mean you can expect the globe changing its rotation direction because of it (:p), changes are slightly more subtle. For example, the suppression of free artists by the media industry has fallen, as have the prices for CDs and DVDs. There were scandalous behaviors and practices that have been stopped because hackers decided to put material proving these things on filesharing networks, where no one could take it down anymore (as opposite to websites that can be taken down easily to prevent such material spread through the internet). In a certain way, filesharing networks grant a freedom of speech and a possibility to circumvent all sorts of censorship that might be imposed on other Medias, because these networks cannot be controlled as other Medias can.

* **Ok... I think that was long enough...** Now you may take a break, drink some coffee and reflect about what you've just read... **or continue reading...**

* The look and feel of Shareaza

Most users will for ever use the default look and feel integrated inside Shareaza. This is the same category of people who never will try out changing settings or enable the other networks build in into Shareaza. These people become happy if a single click provides them a list of files to choose from and they are satisfied when they get the file they like in a reasonable time.

“Panem et circenses” Give them bread and games and they will be satisfied. However, other people *might* exist. People who will try out how Shareaza looks like with different skins loaded and using Power Mode or Windowed Mode, for example. Skins can be get really simple: Either you visit the Shareaza forums (where you can download for example a skin for native Vista look and feel created by SkinVista) or you simple use Shareazas integrated search mechanism. You will be surprised how much search results the search for .sks (Shareaza skin file) has. You also may what to try to create your own skin. This is not difficult at all (in fact you only need some basic HTML/XML knowledge, everything else can be learned during two hours) and you will find all help you need at the [skinning forum section](#). To give you an example: below can be seen a screenshot of my Shareaza how it looks right now: it gives a good overview over what’s happening and everything is (more or less) arranged to make working fast and efficient.

The screenshot displays the Shareaza application window with the following sections:

- Neighbours:** A table listing active peers with columns for Address, Port, T., Packets, Bandwidth, Total, Flow, Leaves, Mode, Client, Name, and Country.
- Graph:** A line chart showing various bandwidth metrics over time, including Total Generic Remote, Gnucleus, Download, and Upload bandwidth.
- Uploads:** A table showing the status of uploaded files, including file names, remote users, sizes, progress, speeds, and clients.

Address	Port	T.	Packets	Bandwidth	Total	Flow	Leaves	Mode	Client	Name	Cou...
6346	0:23:59	2506 - 69	0.28 KB/s - 0.00 KB/s	241 KB - 23 KB	0 (0)	297/300	G2 Hub	Shareaza 2.3.1.0	vendetto	FR	
31417	1:02:00	27293 - 5223	0.06 KB/s - 0.15 KB/s	341 KB - 670 KB	0 (0)		G1 Ultrapeer	LineWire/4.18.8		US	
2209	1:14:55	48928 - 9127	0.05 KB/s - 0.10 KB/s	507 KB - 985 KB	0 (81)		G1 Ultrapeer	LineWire/4.18.8		US	
6346	4:02:44	9646 - 406	0.08 KB/s - 0.00 KB/s	923 KB - 45 KB	0 (0)	299/300	G2 Hub	Shareaza 2.4.0.0	nobody	US	
35000	4:33:33	18814 - 453	0.15 KB/s - 0.00 KB/s	1.77 MB - 70 KB	0 (0)	282/300	G2 Hub	Shareaza 2.3.0.0	BREEZE	US	
6146	5:04:21	79113 - 9925	0.06 KB/s - 0.01 KB/s	1.09 MB - 1.79 MB	0 (0)		G1 Ultrapeer	LineWire/4.18.1		US	
7848	5:28:18	201206 - 25...	0.07 KB/s - 0.11 KB/s	2.14 MB - 3.22 MB	0 (0)		G1 Ultrapeer	LineWire/4.18.3		US	
5467	5:28:22	238252 - 27...	0.10 KB/s - 0.02 KB/s	3.26 MB - 3.81 MB	0 (1)		G1 Ultrapeer	LineWire/4.18.3		US	
92.241.164.30	4242	5:28:30	115 - 100	0.00 KB/s - 0.00 KB/s	3.60 KB - 47 KB	0 (0)	270634	eDonkey	eDonkey (HighD)	eDonkeyServer No1	RU

Uploaded File	Remote User	Size	Progress	Speed	Client	Cou...
Torrent Uploads		1/7		0.00 KB/s		
pics		4/0		0.68 KB/s		
little files		1/0		0.33 KB/s		
eDonkey Partials		2/838		2.80 KB/s		
eDonkey Core		1/450		0.00 KB/s		
Partial Files		2/18		1.23 KB/s		
All Files		2/10		2.02 KB/s		

* **What are the different networks useful for?**

Gnutella2: Gnutella2 (G2) is Shareaza's premier network. The network is small compared to larger networks like FastTrack (Kazaa) or eDonkey, but it is powerful, with many features and great efficiency. You should expect smaller queues on Shareaza (1-25 is the norm) and best speeds. The only thing hurting speeds on the big files is the low number of users. Gnutella2 is optimal for both large and small files and provides the fastest speeds.

Gnutella: A network of mostly small files, good for music. It is much like Gnutella2 in the way that it acts in a similar structure, but it lacks the efficiency and features. It also has short queues, like Gnutella2. Gnutella is best for smaller files (~ 4-10 MB).

eDonkey2000: eDonkey (ed2k) is a network of long queues and large files. Don't be surprised if you try to download something on eDonkey and you're waiting in queues at position 10000 or later. But, the network has pretty much everything, if you wait long enough (say, leave your download going overnight or longer). You'll be able to get most files **eventually**. The download is going to be slow, much slower than most other networks. This is why the network is suited for broadband users, who can leave their connections active all the time and wait through the queues and the slow download. However, there is a credit system involved - the more you upload to a user, the faster you go through their queues, helping you download faster. The longer you leave it on, the faster your download will be - to a point, of course. eDonkey is best for larger files (30 MB +) and rare content, because of its big userbase.

If you are using ed2k, make sure you download files which have sources in both, ed2k and one of the other networks. You will get best speeds only on such files where you can download from two networks simultaneously.

* **The file organizer/library window**

There is more than one hidden feature inside this part of Shareaza. Did you know for example that you can use the Library to organize all the files on your computer without forcibly sharing them? If you right click in the folder view on a folder, you can choose not to share this folder at all.

Did you ever notice that you can add custom subfolders to organizer view of your files? This is really interesting if you would like to hand over a list of files you downloaded to a friend also using Shareaza. You can easily give your friend download links for the files contained in one of your folders (whether this is a custom created one or one of the default ones doesn't matter) by using a feature that is not really well known to 90% of the Shareaza users: Shareaza collections. Right click at a folder and select 'Export Collection...'. A .collection file will be created in your default collection folder (check your settings where it's located), with some kilobytes of size which you can easily mail to your friend. Once he opens it, he can choose from a list of files (those which you previously added to the folder you later exported) to download.

* **MAGNET links**

By the way, if you would like to hand somebody only one single file, right click at the file in the library, search or download window and select 'copy URI' out of the context menu, add yourself to the fixed sources and select the appropriate URI. The first one (magnet) is more widely used, I consider you using this one. If the person to which you would like to handle the download information to uses an eD2k client, you will have to use the second one.

Magnet links are much like torrents, but they don't need the .torrent file, neither do they need a tracker, and they can be used in forums and in websites, as if they were a normal text link.

* **One last thing...**

If you are really interested in more information, visit the [Shareaza Wiki](#)... Especially the [FAQ](#) section contains lots of explanations, which are very interesting to read threw...

[→ back to the summary](#)

Please report spelling mistakes as well as other possible improvements to this guide here:

<http://pantheraproject.net/forum/viewtopic.php?f=5&t=531>

Updates can be got in the same threat.

If you would like me to add something special to the next version of this guide, feel free to post your request on the same location.

THX in advance,
OldDeath

PS.: Big THX to F. Schmit, M. Wohlfarth and to shanu for reporting mistakes and doing some correction work! (=